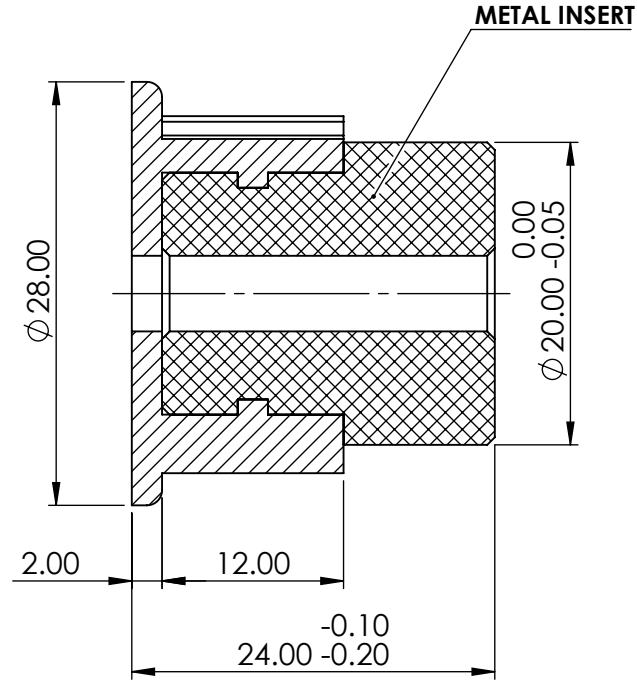
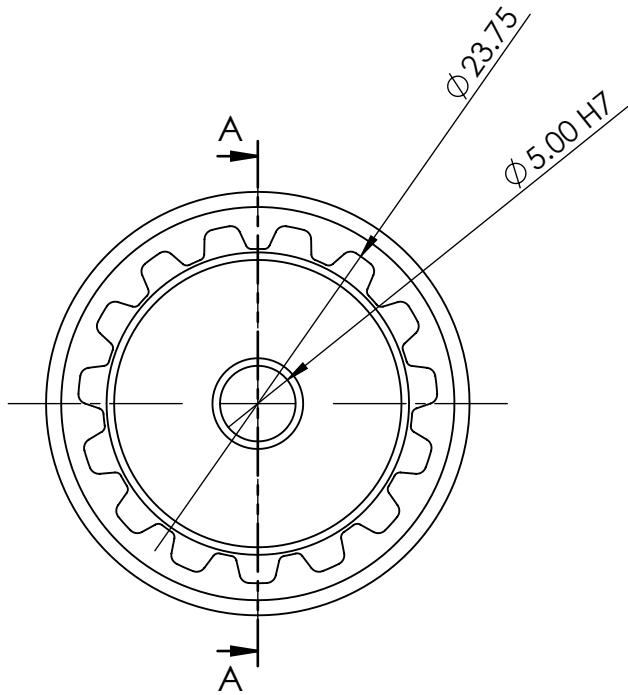


CREATED DATE

30/1/22



SECTION A-A

GENERAL TOLERANCE'S FOR DIMENSIONS AND FORM POSITION (Ref. ISO 2768 sk)

DEVIATIONS FOR RADI AND CHAMFERS
RANGE OF NOMINAL DIMENSIONS

DEVIATIONS FOR GEOMETRY

NAME	DATE
DRAWN MANOJ	30/1/22
CHK'D MILLIND	30/1/22
APPVD KARVE	30/1/22

TUFF PLAST PUNE PVT. LTD.

DATE REVISION

MODEL NAME

15XL 'B' type

DWG NO./PART NO.

XL-015-B-PRT-H-01.22

MATERIAL:

WEIGHT: Gram

DO NOT SCALE

SHEET 1 OF 1

	DEVIATIONS FOR LINEAR DIMENSIONS								DEVIATIONS FOR ANGULAR DIMENSIONS				
	RANGE OF NOMINAL DIMENSIONS								RANGE OF NOMINAL DIMENSIONS				
ABOVE	0.5	3	6	30	120	315	1000	2000	ABOVE	-	10	50	120
UPTO	3	6	30	120	315	1000	2000	4000	UPTO	10	50	120	-
TOL.	± 0.1	± 0.1	± 0.2	± 0.3	± 0.5	± 0.8	± 1.2	± 2	TOL.	$\pm 1^\circ$	$\pm 30'$	$\pm 20'$	$\pm 10'$

DEVIATIONS FOR RADI AND CHAMFERS RANGE OF NOMINAL DIMENSIONS				
	0.5	3	6	30
TOL.	± 0.2	± 0.5	± 1	± 2

DEVIATIONS FOR GEOMETRY						
ABOVE	10	30	100	300	1000	3000
UPTO	10	30	100	300	1000	3000
—	0.05	0.1	0.2	0.4	0.6	0.8
—	0.4	0.4	0.4	0.6	0.8	1
—	0.6	0.6	0.6	0.6	0.8	1
—	0.2	0.2	0.2	0.2	0.2	0.2

IF IN DOUBT, ASK

PROPRIETARY & CONFIDENTIAL
THE INFORMATION CONTAINED IN THIS
DRAWING IS THE SOLE PROPERTY OF
TUFFPLAST ANY REPRODUCTION IN PART IS
PROHIBITED.

A4