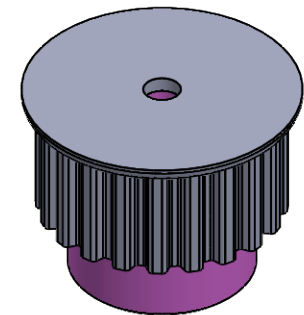
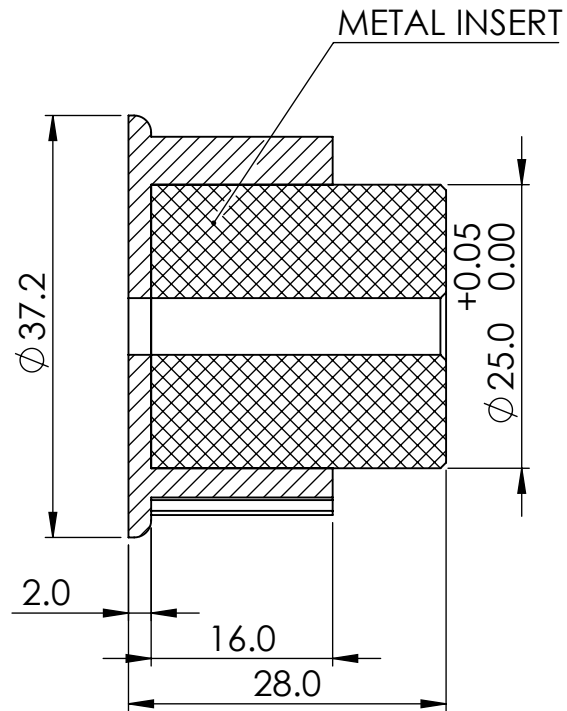
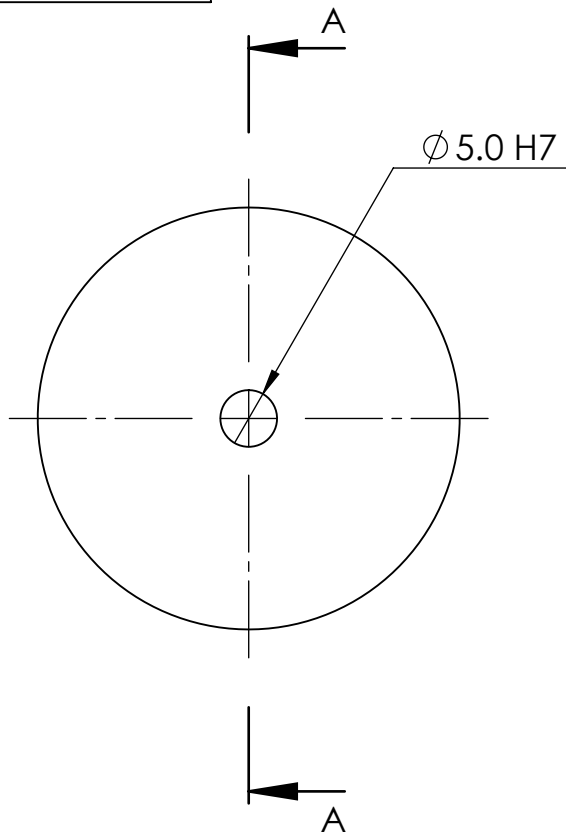


CREATED DATE

12/4/19



SECTION A-A

GENERAL TOLERANCE'S FOR DIMENSIONS AND FORM POSITION (Ref. ISO 2768 sk)

DEVIATIONS FOR RADI AND CHAMFERS  
RANGE OF NOMINAL DIMENSIONS

DEVIATIONS FOR GEOMETRY

NAME	DATE
DRAWN MANOJ	12/4/19
CHK'D TUKARAM	12/4/19
APP'VD KARVE	12/4/19

TUFF PLAST PUNE PVT. LTD.

DATE REVISION

MODEL NAME  
21XL Pulley B

DWG NO./PART NO.  
XL-021-B-PRT-H-04.19

SHEET 1 OF 1

	DEVIATIONS FOR LINEAR DIMENSIONS								DEVIATIONS FOR ANGULAR DIMENSIONS				
	RANGE OF NOMINAL DIEMENSIONS								RANGE OF NOMINAL DIEMENSIONS				
ABOVE	0.5	3	6	30	120	315	1000	2000	ABOVE	-	10	50	120
UPTO	3	6	30	120	315	1000	2000	4000	UPTO	10	50	120	-
TOL.	$\pm 0.1$	$\pm 0.1$	$\pm 0.2$	$\pm 0.3$	$\pm 0.5$	$\pm 0.8$	$\pm 1.2$	$\pm 2$	TOL.	$\pm 1^\circ$	$\pm 30'$	$\pm 20'$	$\pm 10'$

RANGE OF NOMINAL DIMENSIONS				
0.5	3	6	30	120
$\pm 0.2$	$\pm 0.5$	$\pm 1$	$\pm 2$	

RANGE OF NOMINAL DIMENSIONS						
ABOVE	10	30	100	300	1000	
UPTO	10	30	100	300	1000	3000
$\perp$	0.4	0.4	0.4	0.6	0.8	1
$\parallel$	0.6	0.6	0.6	0.6	0.8	1
$\nabla$	0.2	0.2	0.2	0.2	0.2	0.2

IF IN DOUBT, ASK

PROPRIETARY & CONFIDENTIAL  
THE INFORMATION CONTAINED IN THIS  
DRAWING IS THE SOLE PROPERTY OF  
TUFFPLAST ANY REPRODUCTION IN PART IS  
PROHIBITED.

MATERIAL:  
WEIGHT: Gram  
DO NOT SCALE

A4