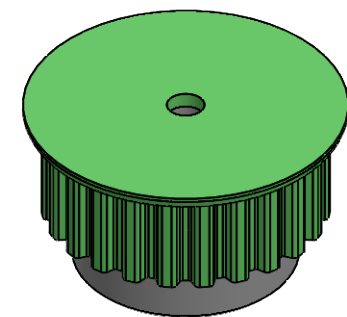
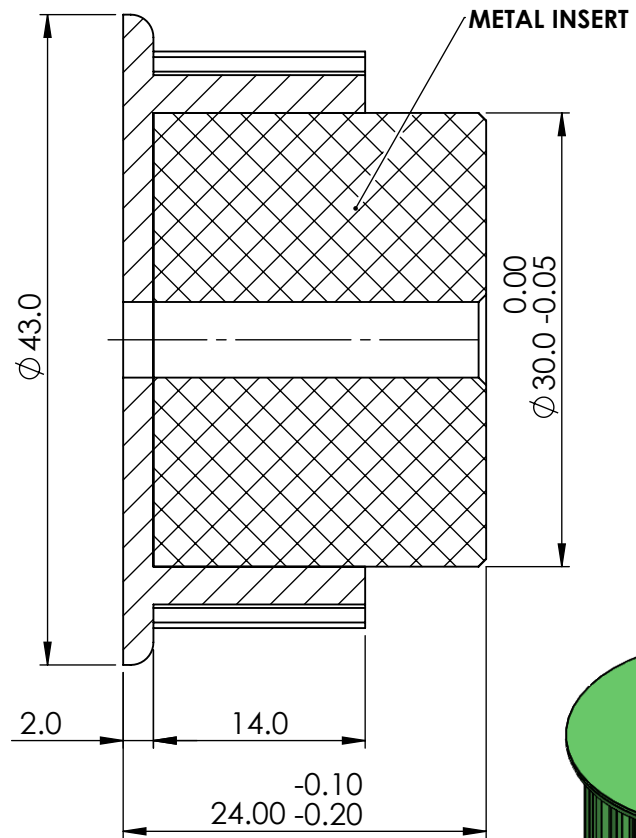
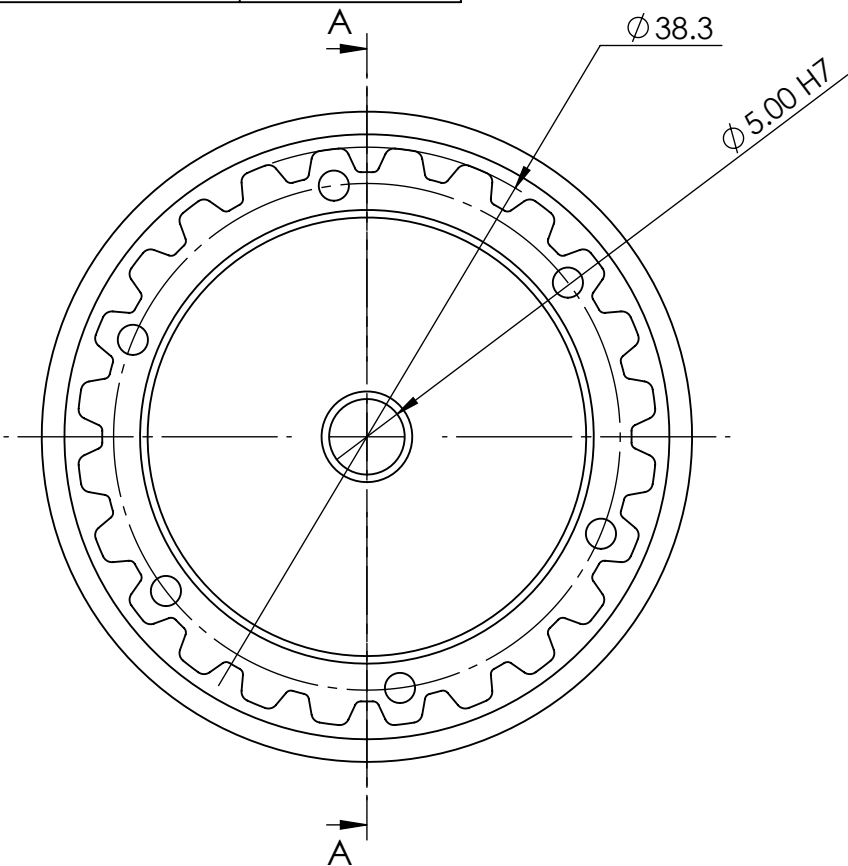


CREATED DATE 2/7/21



SECTION A-A

GENERAL TOLERANCE'S FOR DIMENSIONS AND FORM POSITION (Ref. ISO 2768 sk)

DEVIATIONS FOR RADI AND CHAMFERS  
RANGE OF NOMINAL DIMENSIONS

DEVIATIONS FOR GEOMETRY

NAME	DATE
DRAWN MANOJ	2/7/21
CHK'D MILLIND	2/7/21
APP'VD KARVE	2/1/22

TUFF PLAST PUNE PVT. LTD.

DATE REVISION

MODEL NAME

24XL pulley B type

DWG NO./PART NO.

XL-024-B-PRT-H-07.21

SHEET 1 OF 1

	DEVIATIONS FOR LINEAR DIMENSIONS								DEVIATIONS FOR ANGULAR DIMENSIONS				
	RANGE OF NOMINAL DIEMENSIONS								RANGE OF NOMINAL DIEMENSIONS				
ABOVE	0.5	3	6	30	120	315	1000	2000	ABOVE	-	10	50	120
UPTO	3	6	30	120	315	1000	2000	4000	UPTO	10	50	120	-
TOL.	$\pm 0.1$	$\pm 0.1$	$\pm 0.2$	$\pm 0.3$	$\pm 0.5$	$\pm 0.8$	$\pm 1.2$	$\pm 2$	TOL.	$\pm 1^\circ$	$\pm 30'$	$\pm 20'$	$\pm 10'$

DEVIATIONS FOR RADI AND CHAMFERS RANGE OF NOMINAL DIMENSIONS				
	0.5	3	6	30
	3	6	30	120
TOL.	$\pm 0.2$	$\pm 0.5$	$\pm 1$	$\pm 2$

DEVIATIONS FOR GEOMETRY									
ABOVE	-	10	30	100	300	1000			
UPTO	10	30	100	300	1000	3000			
$\perp$	0.05	0.1	0.2	0.4	0.6	0.8			
$\parallel$	0.4	0.4	0.4	0.6	0.8	1			
$\equiv$	0.6	0.6	0.6	0.6	0.8	1			
$\nabla$	0.2	0.2	0.2	0.2	0.2	0.2			

IF IN DOUBT, ASK

PROPRIETARY & CONFIDENTIAL  
THE INFORMATION CONTAINED IN THIS  
DRAWING IS THE SOLE PROPERTY OF  
TUFFPLAST ANY REPRODUCTION IN PART IS  
PROHIBITED.

MATERIAL:  
WEIGHT: Gram  
 $\varnothing$  DO NOT SCALE

A4