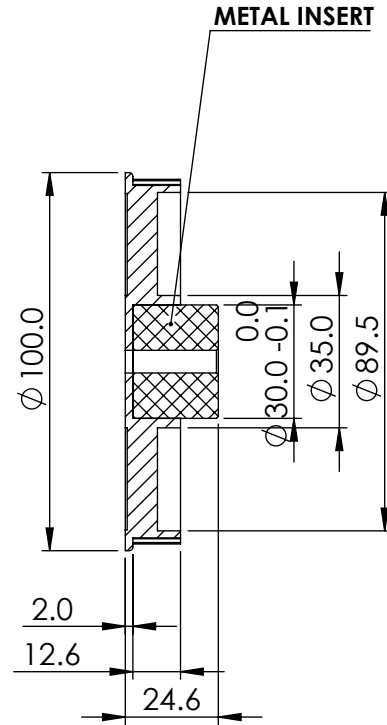
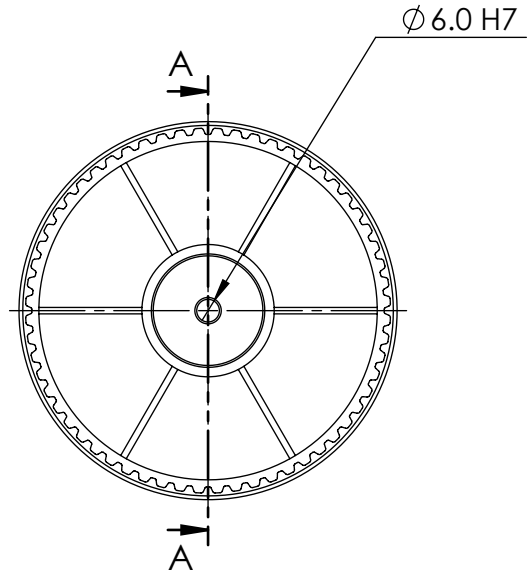
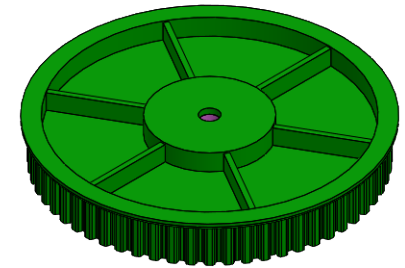


CREATED DATE

1/11/20



SECTION A-A



GENERAL TOLERANCE'S FOR DIMENSIONS AND FORM POSITION (Ref. ISO 2768 sk)

DEVIATIONS FOR RADI AND CHAMFERS
RANGE OF NOMINAL DIMENSIONS

DEVIATIONS FOR GEOMETRY

NAME	DATE
DRAWN MANOJ	6/9/21
CHK'D TUKARAM	6/9/21
APP'VD KARVE	6/9/21

TUFF PLAST PUNE PVT. LTD.

DATE REVISION

MODEL NAME
60XL pulley-insert

DWG NO./PART NO.
XL-060-B-PRT-H-11.21

WEIGHT: 78.59Gram
SHEET 1 OF 1

	DEVIATIONS FOR LINEAR DIMENSIONS								DEVIATIONS FOR ANGULAR DIMENSIONS				
	RANGE OF NOMINAL DIEMENSIONS								RANGE OF NOMINAL DIEMENSIONS				
ABOVE	0.5	3	6	30	120	315	1000	2000	ABOVE	-	10	50	120
UPTO	3	6	30	120	315	1000	2000	4000	UPTO	10	50	120	-
TOL.	±0.1	±0.1	±0.2	±0.3	±0.5	±0.8	±1.2	±2	TOL.	±1°	±30'	±20'	±10'

DEVIATIONS FOR RADI AND CHAMFERS RANGE OF NOMINAL DIMENSIONS				
ABOVE	0.5	3	6	30
UPTO	3	6	30	120
TOL.	±0.2	±0.5	±1	±2

DEVIATIONS FOR GEOMETRY						
ABOVE	10	30	100	300	1000	3000
UPTO	10	30	100	300	1000	3000
TOL.	0.05	0.1	0.2	0.4	0.6	0.8
IF IN DOUBT, ASK	0.6	0.6	0.6	0.6	0.8	1
	0.2	0.2	0.2	0.2	0.2	0.2

PROPRIETARY & CONFIDENTIAL
THE INFORMATION CONTAINED IN THIS
DRAWING IS THE SOLE PROPERTY OF
TUFFPLAST ANY REPRODUCTION IN PART IS
PROHIBITED.

MATERIAL:
PPS
WEIGHT: 78.59Gram
DO NOT SCALE

A4